

## Vicenza Thrombophilia and Arteriosclerosis Project

An epidemiologic investigation on the prevalence of thrombophilia in the general population. For a detailed overview, look in *Thromb. Haemostas*, Vol 78:636-640, 1997.

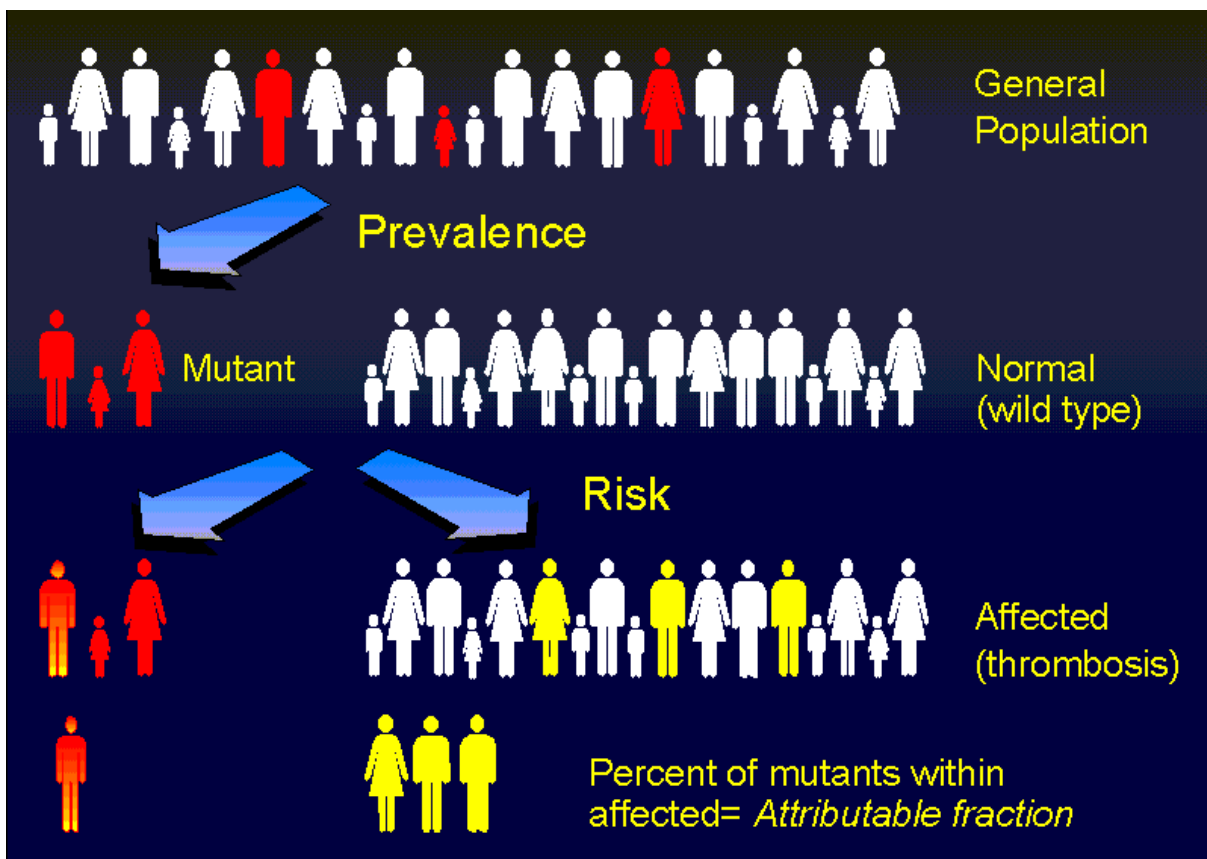
Take a look to the slides of the presentation given at the XVIth Congress of the International Society on Thrombosis and Haemostasis, June 1997

### Study overview

- A cross-sectional randomized epidemiologic investigation on venous thrombophilia
- 15,000 subjects studied from June 1993 to May 1997

# Why a cross-sectional study?

- Absence of referral bias
- Exact *prevalence* measurement
- Estimation of *risk*
- Estimation of *attributable fraction*
- Personal and *familial* investigation



## Studied Sample

- From June 1993 to May 1997, we recruited 15,000 Caucasian subjects aged 18 - 67, 7045 males 7955 females
- The overall participation rate was 64.3% (78.3% for those contacted with a phone call)
- Sample composition almost equal to that of the target population as for age and sex

## Diagnosis of personal episodes of DVT/PE

Questionnaire:

Ever suffered painful leg swelling?

NO

Ever received a diagnosis of venous thrombosis?



STOP

Ever hospitalized for pulmonary embolism?



YES

Did you receive heparin/warfarin to treat the above mentioned episode?

YES



**PREVIOUS VT**



NO

Venous reflux at Doppler US scan?

YES



**PREVIOUS VT**



NO

**EXCLUDE VT**

## Diagnosis of VTE/EP

- A validated methodology with high sensitivity (71.3%) and specificity (98.9%)

Frezzato et al., *Am.J.Epidemiol*, 1996

## Scoring system for DVT/PE in subjects participating to the VITA Project

Event	Associated risk factor	Score
DVT or PE, Age < 45	None	4
DVT or PE, Age < 45	Pregnancy- puerperium, estrogen therapy	2
DVT or PE, Age > 45	None	2
DVT or PE, any age	Surgery, trauma	1

## **The VITA Project: some preliminary results**

- Prevalence of past DVT/PE
- Prevalence of thrombophilia
- APC resistance and FV Leiden in the general population: prevalence and risk
- C677T mutation in the MTHFR gene and DVT
- C20210 mutation and DVT

### **Prevalence of confirmed VTE in subjects enrolled by the VITA Project ( May 1993 - December 1996)**

	<b>Overall</b>	<b>Males</b>	<b>Females</b>
Subjects enrolled	12,020	5602	6325
Proven VTE	93	32	61
Prevalence	0.77 % 1:129 subjects	0.57 % 1:175 subjects	0.96 % 1:103 subjects